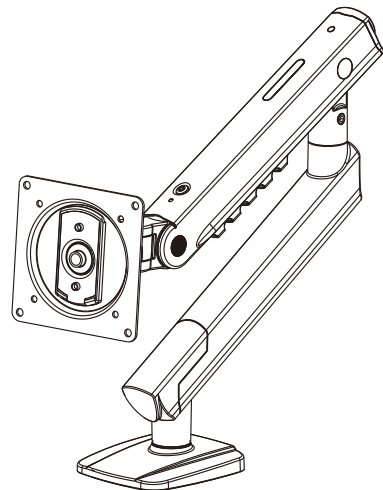




Ergonomic Desk Monitor Arm
installation instructions



Multi-Language Manual



Installation Video

Do not begin the installation until you have read and understood entire instructions and safety information . Severe personal injury and property damage can result from improper installation or assembly.

- If you do not understand the instructions or have any Concerns or questions, please contact a qualified local installer.
- Do not install or assemble if the product or hardware is damaged or missing, if you require replacement parts, please contact your local distributor for assistance.
- This product fits most 17"-32"Monitor, Max load can not exceed 9kg/19.8lbs.
- For safe installation, the desk used for mounting must be sturdy and stable, capable of supporting three times the total load (including the mount, monitor, laptop, and all accessories).
- Do not use this product for other than the original designed.
- This product contain moving parts and small parts, please use with caution.
- When installing monitor or Laptop, please do not damage electrical wiring or power source,Installation and routing of monitor cables on the monitor bracket must be secured against twisting and squeezing.
- The manufacturer disclaims any liability for the modifications, improper installation, installation over the specified weight range or inappropriate use . The manufacturer will not be liable for any damages arising out of the use of, or inability to use, the product.
- This product is designed for indoor used only, use of this product outdoor could lead to product failure and severe personal injury.
- This product contains a high pressure Mechanical Spring, fire and percussion prohibited. Also it strictly prohibited to dismantle without professionals . Please return to the manufacturer or hand over to professional agencies if the product is scrapped. In order to ensure the performance of Mechanical Spring, full direction adjustment of the product arm is recommended several times per month.

The manufacturer reserves the right to modify the content of this manual at any time and without prior notice.

Symbols/符号 执行标准:Q/320583AJHJ 001-2025(企业标准)

	Tightening Direction loosening Direction		Warning
	+ Tightening Direction - loosening Direction		By Hand
	Phillips Screwdriver		Hex Wrench

TENSION ADJUSTMENT
AFTER MOUNT INSTALLED



Do not adjust tension without monitor attached.

- 1.Read your display packaging or manual to find out display net weight.
- 2.Ensure display net weight between 4.4-19.8 lbs(2-9 kg)
- 3.Ensure display has been put onto mount.

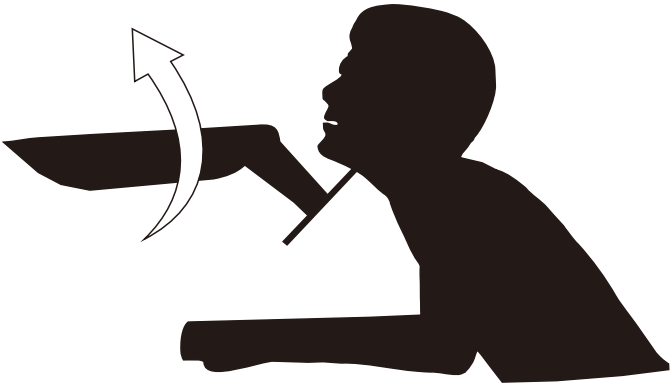
Adjustment sign



Anti- clockwise
to Reduce tension
(Carry less weight)

Clockwise
to Increase tension
(Carry more weight)

Warning !



Parent Company :
Kunshan Hongjie Electronics Co.,Ltd
No.1050, Fu Chun Jiang Road,Economic Development Zone ,
Kunshan City , Jiangsu. China.215333

Manufacturer :
Anhui Hongjie Ergonomic Technology Co.,Ltd
No.10 Guangping Road,Economic Development Zone ,
Guangde,Xuancheng City , AnHui. China.242200

Email: info@NBergonomic.com www.NBergonomic.com

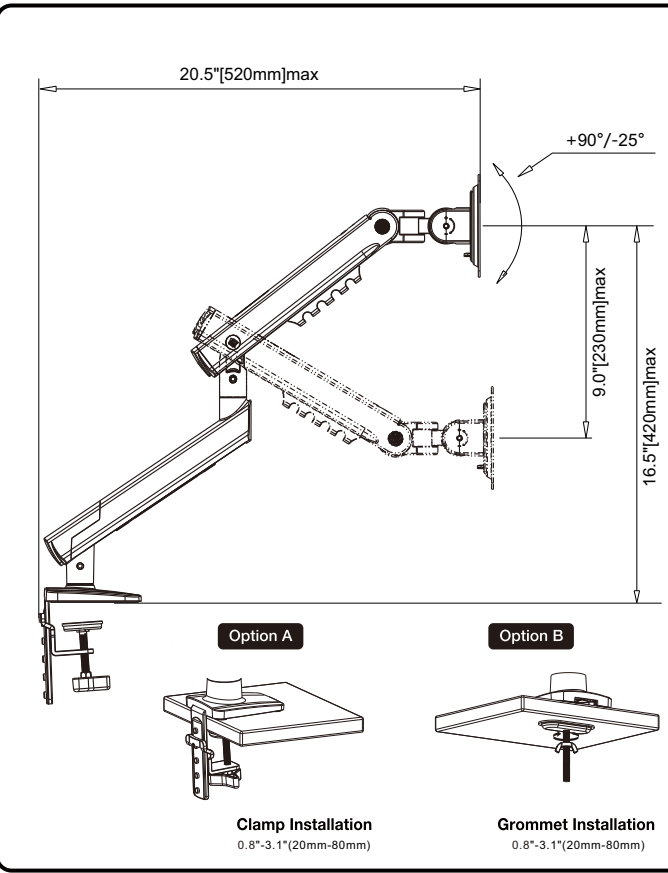
Installation Manual

Clamp Installation
Grommet Installation

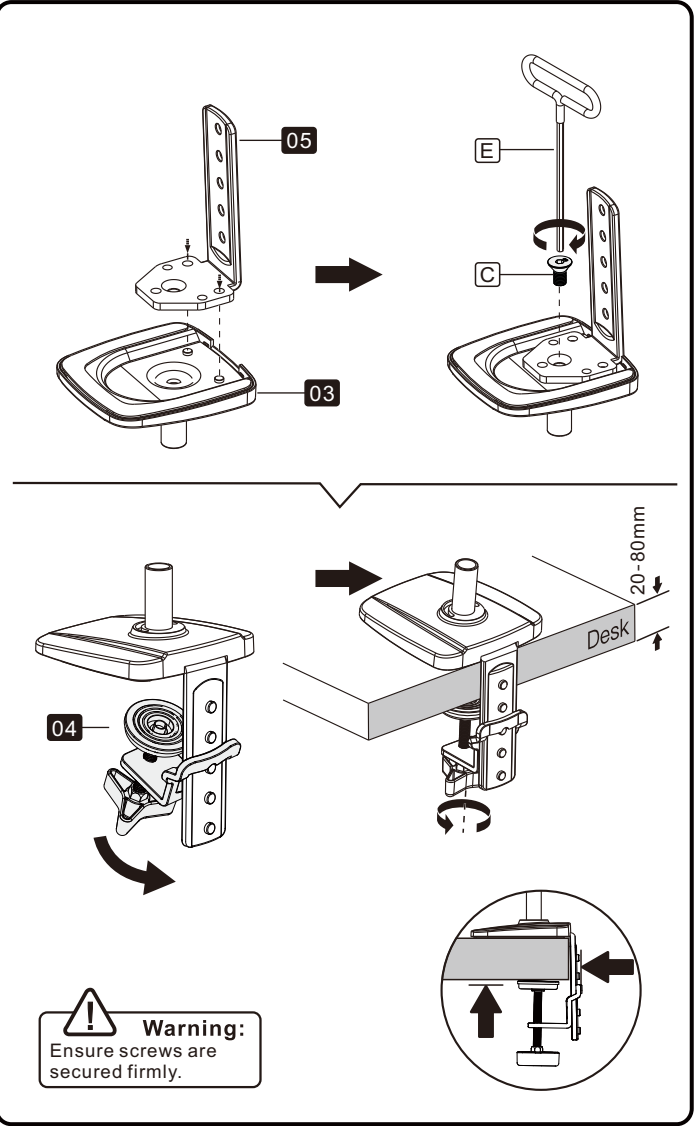
Part list

1		4	
2		5	
3		6	
A		B	
C		D	
E		F	
G		H	
I			

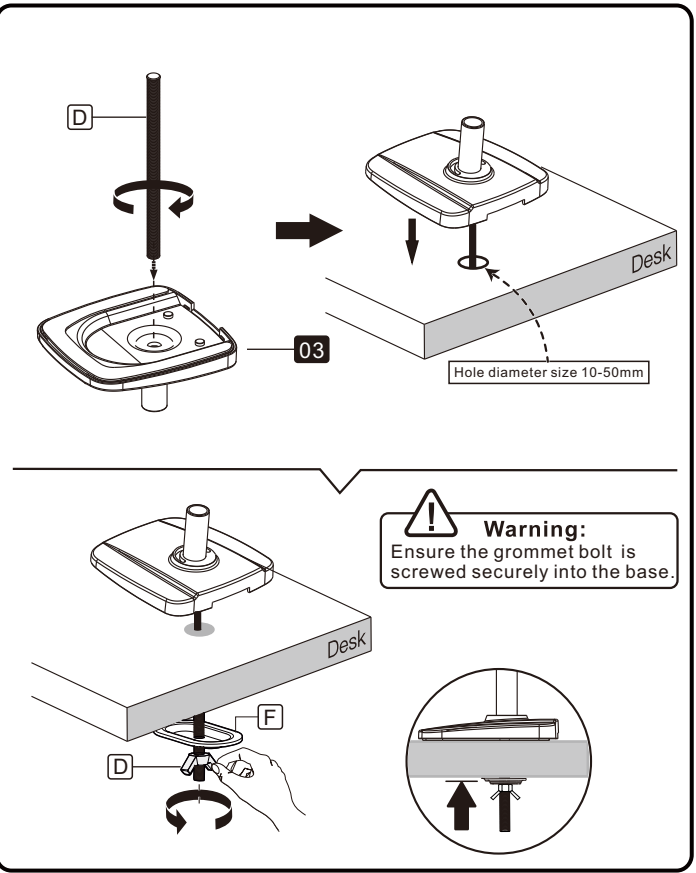
Adjustable Parameters



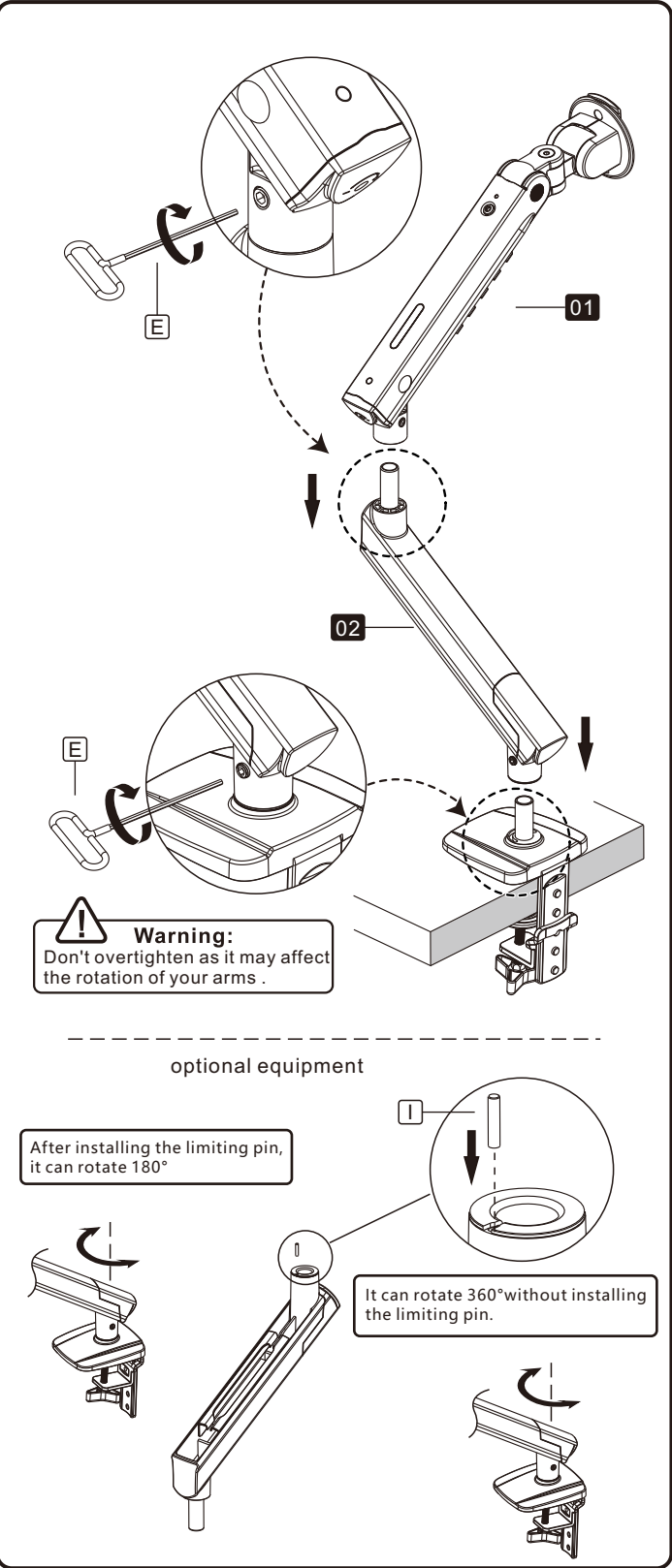
A1.Clamp Installation (Option A)



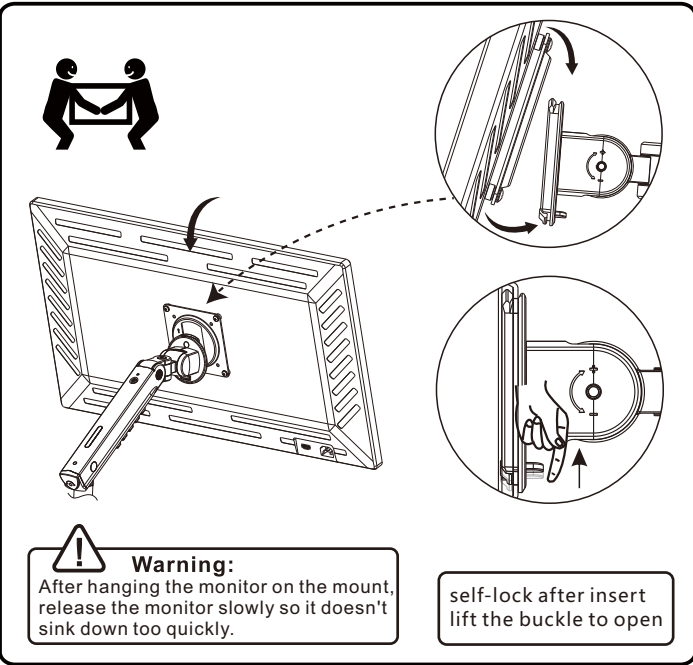
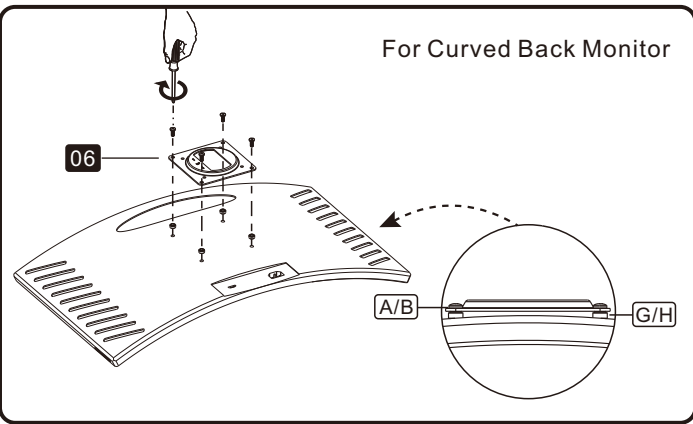
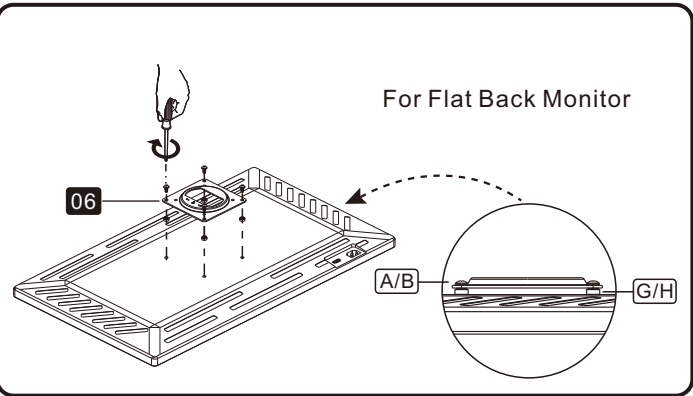
A2.Grommet Installation (Option B)



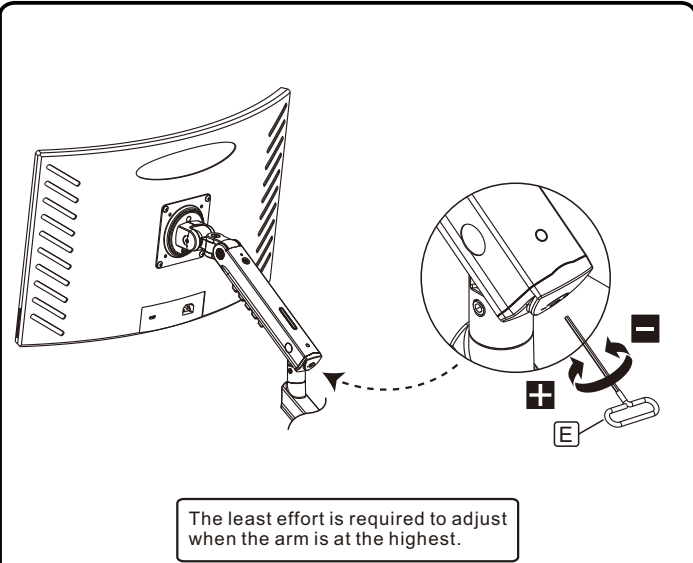
B.Attach the Arm Assembly to the Base



C.Display Installation



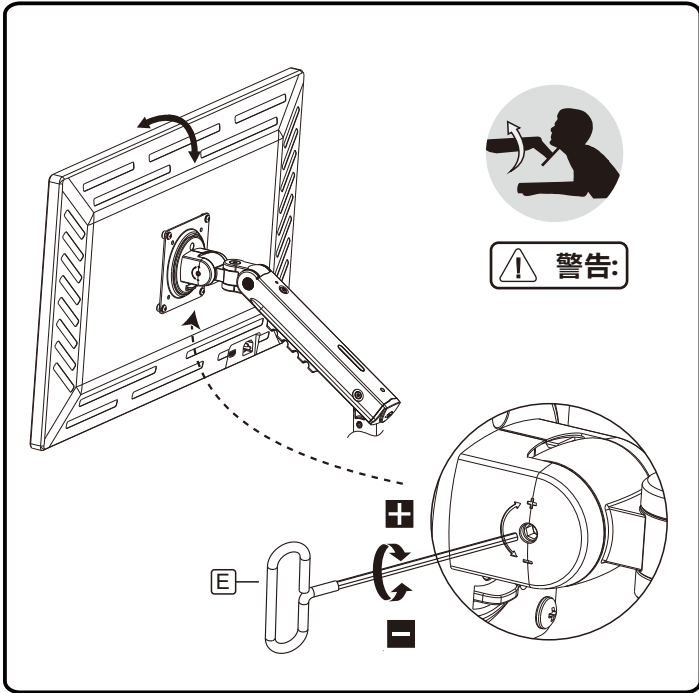
D.Adjust Spring Tension



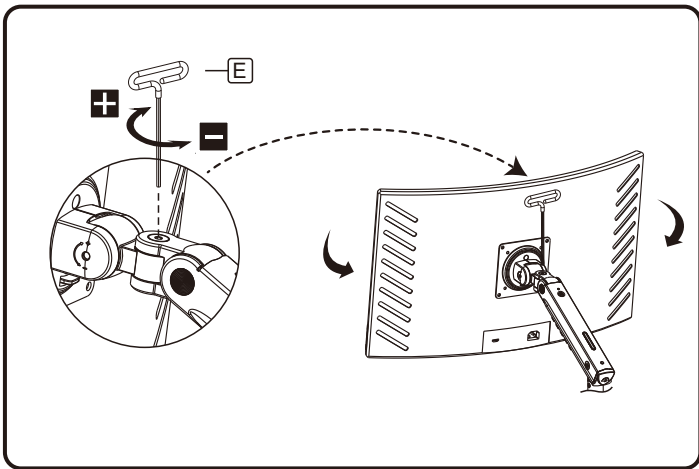
Note : Ensure display weight is within load range

1. If display can be hovered at any height after display installed. No adjustment needed.
2. If display lifts up automatically after installation , adjust as follows:Wind the set screw to "-"direction to reduce torque by using E ,4mm Allen key , until display can be hovered at any desired position.
3. If display goes down automatically after installation , adjust as follows: Wind the set screw to "+"direction to increase torque by using E,4mm Allen key , until display can be hovered at any desired position.

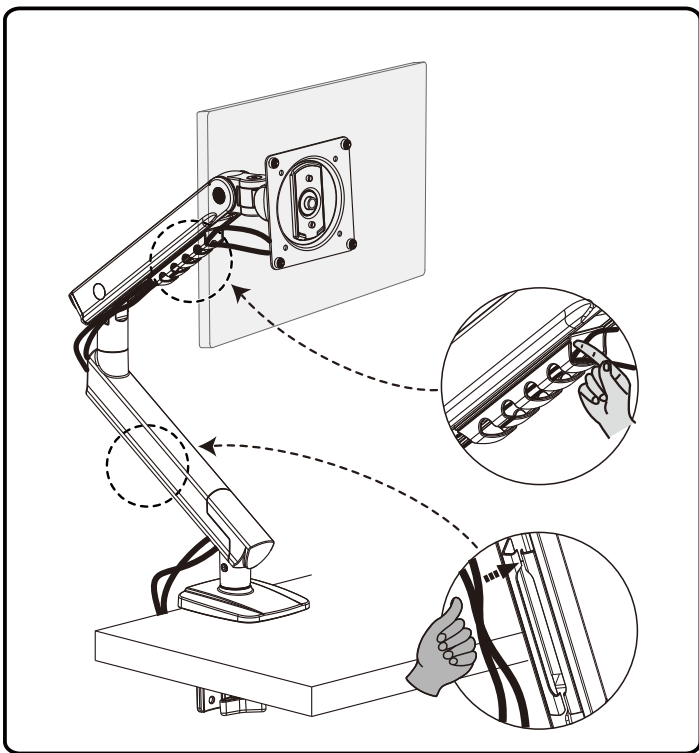
E.Adjust the Tilt Angle of the Monitor



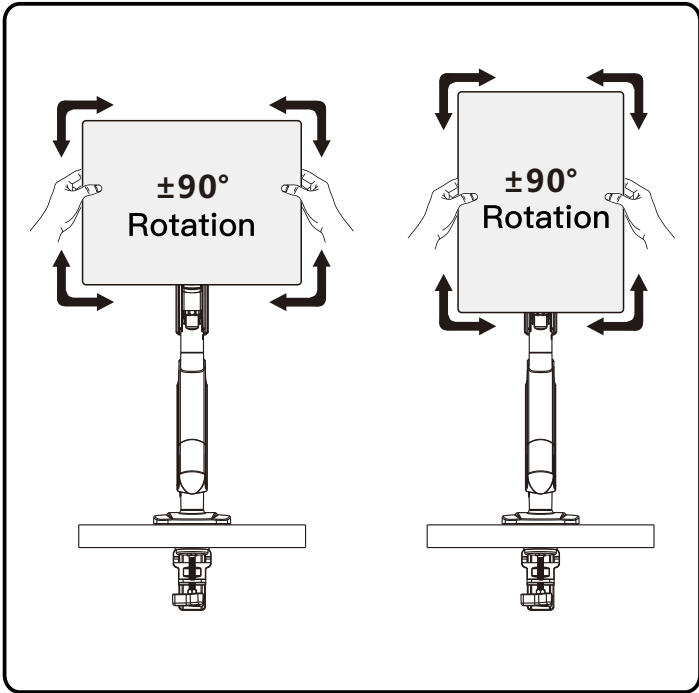
F.Left and Right Swivel Adjustment



G.Power and Display Cable Installation



H.Adjust the Rotation of the Monitor



I.Adjust the Swivel Position of the Monitor

